



TECAPRES®

Ø38mm
750daN

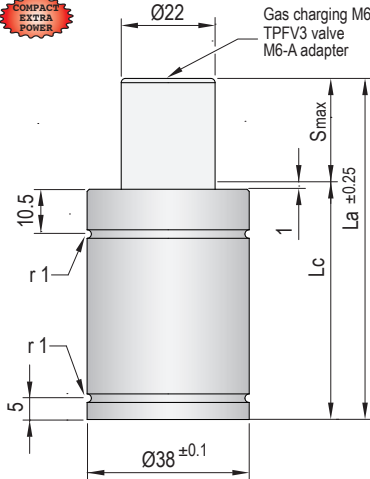
TITAN 38

VDI SAFETY



PED
2014/68/EU

COMPACT
EXTRA
POWER

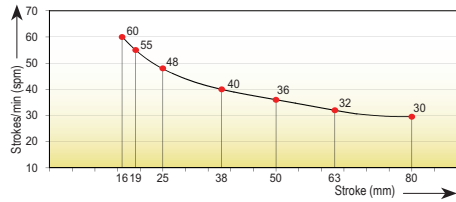


i Pressure medium **Nitrogen (N₂)**

Max. charging pressure	190 Bar
Min. charging pressure	35 Bar
Rod seal area	3,80 cm ²
Operating temperature	0°C - 80°C
Force increase by temperature	0,33 %/°C
Max. stem speed	1,2 m/s
Maintenance kit	Kit T38

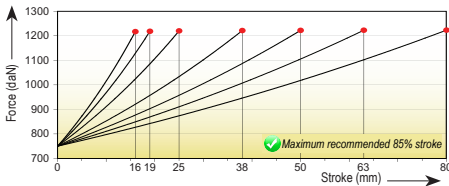


Maximum strokes / minute (at 20°C)

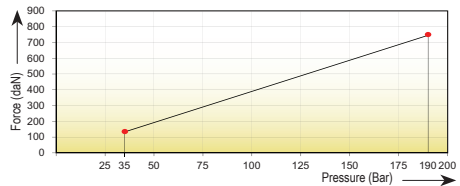


Code	Smax mm	La mm	Lc mm		Fa daN		F daN		Fc daN		P Bar	V l		Kg		
TITAN 38x16	16	58	42	750 ±5% (20°C)	1110		1110		1215	190 (20°C)	0,016	0,27		0,27		
TITAN 38x19	19	65	46				1110		1215						0,019	0,30
TITAN 38x25	25	78	53				1115		1220						0,025	0,32
TITAN 38x38	38	102	64				1115		1220						0,037	0,35
TITAN 38x50	50	127	77				1115		1220						0,049	0,39
TITAN 38x63	63	152	89				1115		1220						0,062	0,42
TITAN 38x80	80	186	106				1115		1220						0,079	0,51

Force/stroke ratio



Initial force/charging pressure ratio



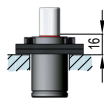
Assembly possibilities



Follow guidelines
Page 287



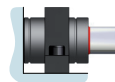
DROP-IN



FS 38-FSC 38



FS 38-FSC 38



FI 38-FI 38/1

TITAN

TPH

TPS

TPSP

TPF

TPK

TPC

TPR

TPB

TPHC

TPA

TPG

TPCT

TPSL

STOP CYLINDER

STOP CYLINDER

TPSR

TPSRs

TPNS

TPHT

